



UCP Valida One Time Activation (OTA) Guide

For practices with Locked Partner Products & to remove the Partner Product Activation step for EMIS Valida users

In partnership with OneLondon
Hosted by NHS South West London





OTA Activation

The UCP have worked with EMIS to implement one time activation (OTA) of the Valida client, the application used by Primary Care to access the UCP.

What this means is that users will no longer need to locally activate the Partner Product on each device that uses the Valida client. This step has caused some practices to lock their access from the Valida client (screenshot below for reference):



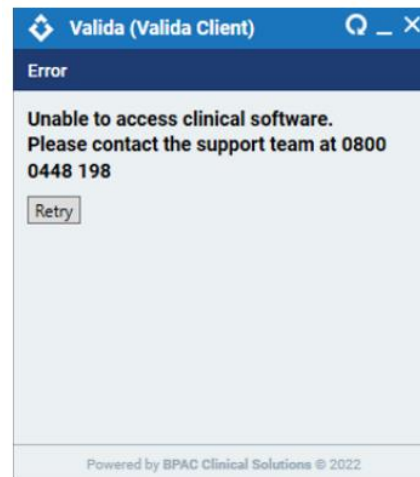
Activate New Partner Product

This user account is locked out please try another user

Username:

Password:

CDB:



Step 1 – Unlock Access

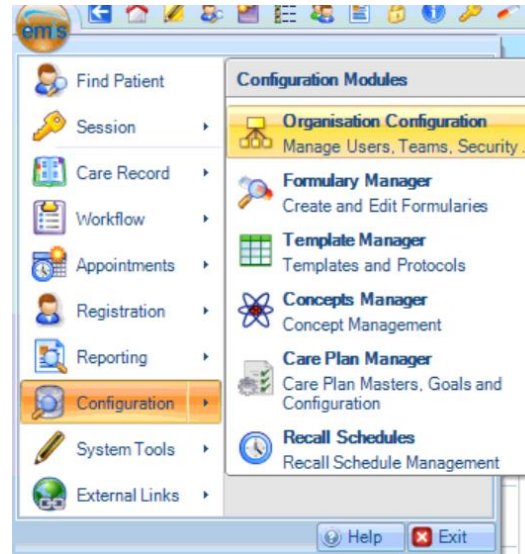


To implement the OTA fix and remove the Activate Partner Product step, the UCP access from the Valida Client must first be unlocked

Note: this process will need to be done by a user with Administrative rights in EMIS

To unlock your UCP Access from Valida:

1. Click the EMIS bubble
2. Configuration
3. Organisation Configuration



Step 1 – Unlock Access



4. Click the Search icon in the top menu bar

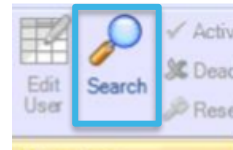
5. Find the user:

First Name: Better

Last Name: SCPA

6. Change the user's password to a password of your choice and make note of this.

7. Click ok and exit out of the user's profile



User details

User profile picture

Upload photo

JPG, PNG or PNG files can be uploaded.
File size limit is 10 MB.
Recommended resolution is 130px * 130px
[Upload](#) | [Remove](#)

* Title: Mr

* First names: Better

* Last name: SCPA

* Gender: Male

* Email address: scpa@cpa.net

Sign in details

* Username: SCPA@cpa.net

* Password: *****

* Confirm password: *****

User must change password on next sign in.

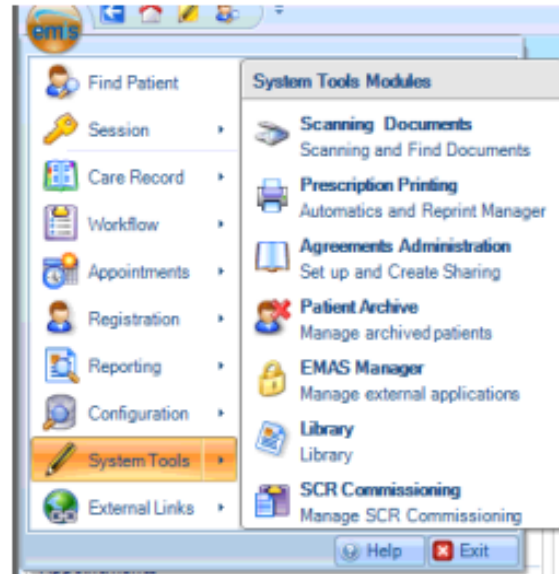
Step 2 – Enabling OTA



To remove the Activate Partner Product step of the Valida Configuration please do the following:

Note: this process will need to be done by a user with Administrative rights in EMIS

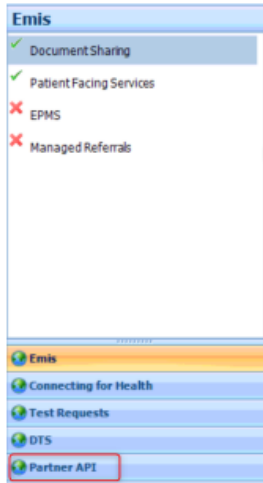
8. Click the EMIS bubble
9. Go to System Tools
10. Go to EMAS Manager



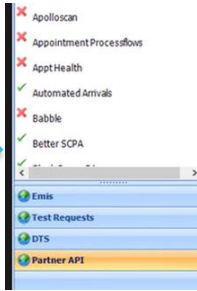
Step 2 – Partner API



11. On the bottom left, click 'Partner API'



12. Find the name 'Better SCPA'



Service Message Details			
Name	Direction	Description	
Emis.Interop.PatientAPI.GetCurrentUser	Inbound	Get current user details	
Emis.Interop.PatientAPI.GetCurrentPatient	Inbound	Get current EMISWeb patient	
Emis.Interop.PatientAPI.GetMatchedPatients	Inbound	Get patients matching given criteria	
Emis.Interop.PatientAPI.GetUserByID	Inbound	Get user details by UserID	
Emis.Interop.PatientAPI.AddAPIUser	Inbound	Add an API User	
Emis.Interop.PatientAPI.GetBookedPatientsV2	Inbound	Get patients booked against given criteria V2	
Emis.Interop.PatientAPI.RequireEmisWebActivation	Inbound	Requires EMIS Web activation	
Emis.Interop.PatientAPI.GetMedicalRecord	Inbound	Get medical record for patient	
Emis.Interop.PatientAPI.GetBase64Attachment	Inbound	Get a base64 encoded attachment	
Emis.Interop.PatientAPI.GetBookedPatients	Inbound	Get patients booked against given criteria	
Emis.Interop.PatientAPI.GetOrganisationV2	Inbound	Get Organisation Details V2	
Emis.Interop.PatientAPI.AutoLogon	Inbound	Check if user can autologon	
Emis.Interop.PatientAPI.GetBase64AttachmentDataV2	Inbound	Get a base64 encoded attachment	

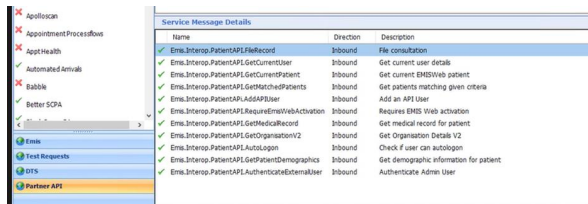
UCP Valida Support Line: 0203 513 6464

13. At the top of the screen, press 'Deactivate Application' and wait 10 seconds

14. At the top of the screen, press 'Activate Application'



15. Successful OTA enablement (the red cross in the box has gone)



Step 3 – select a test patient



16. Select a Test patient – the Valida tile should display as per the below:



You have successfully unlocked your access and activated the EMIS One Time Activation for the Valida client!

Users will no longer be asked to activate the Partner Product (the below image).

If you still see the below screen after these steps have been done – please contact the [UCP Support Desk](#).

